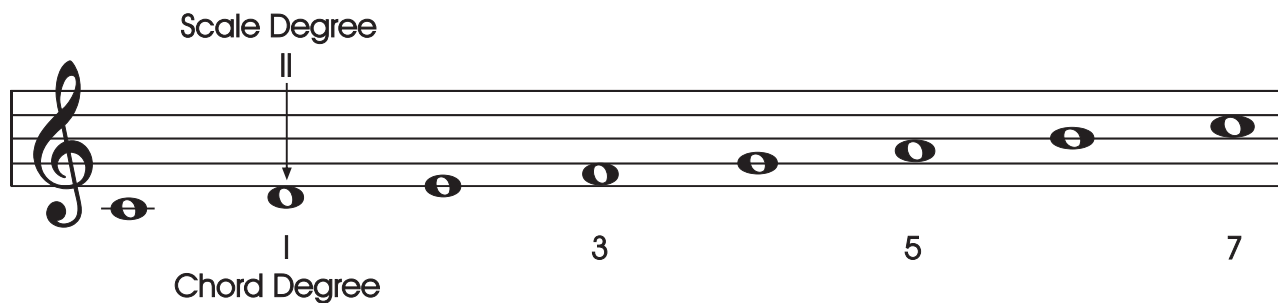


MINOR 7 ARPEGGIO

The minor 7 chord is built from the second degree of a major scale.

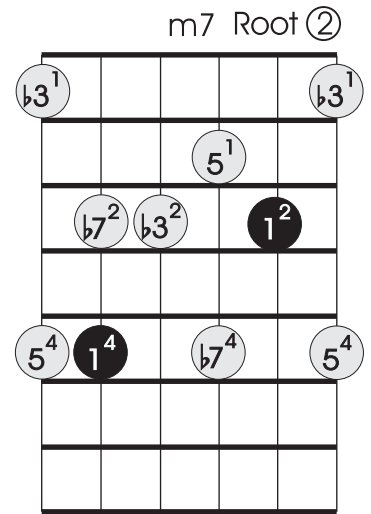
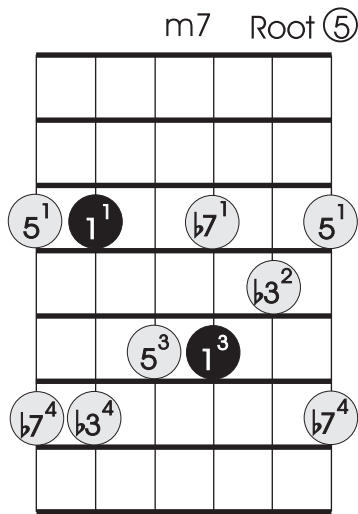
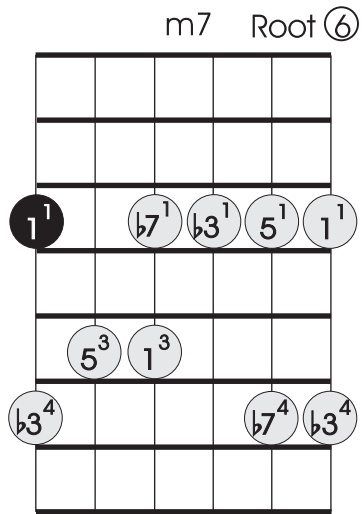


Therefore, the notes of a Dm7 chord are: D F A C. Note that the distance between the D and F, or the 1st and 3rd of the chord is a minor 3rd, a tone plus a semi-tone. In the major 7 and dominant 7 chords, the distance between the 1 and 3 is two tones or a major 3rd. The sound of "minor" is in the minor 3rd distance between 1 and 3.

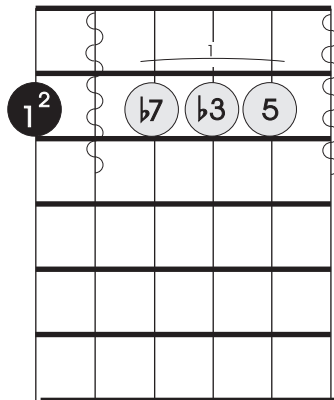
Three musical diagrams illustrating the construction of different 7th chords. Each diagram shows a treble clef staff with notes and their corresponding scale degrees (1, 3, 5, 7).
1. **Cmaj 7**: Notes C (1), E (3), G (5), B (7). A bracket between C and E is labeled "Major 3rd". A bracket between C and B is labeled "2 Tones".
2. **G 7**: Notes G (1), B (3), D (5), F (7). A bracket between G and B is labeled "Major 3rd". A bracket between G and F is labeled "2 Tones".
3. **Dmin 7**: Notes D (1), F (3), A (5), C (7). A bracket between D and F is labeled "Minor 3rd". A bracket between D and C is labeled "1 Tone and a half".

The major 7 chord has a major 3rd with a major 7th from the root. The 7 chord has a major 3rd with a minor 7th from the root and the minor 7 chord has a minor 3rd with a minor 7th from the root.

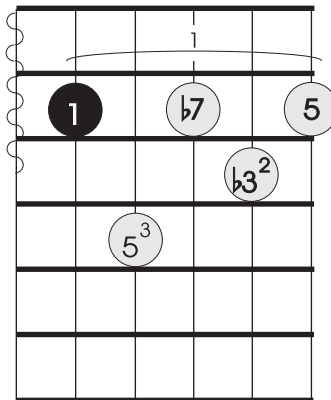
Minor 7 Arpeggio



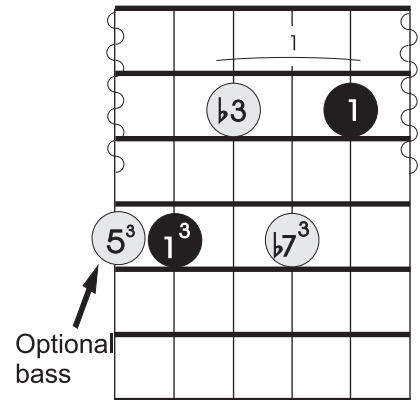
Related Chord Forms
m7



m7



m7



Chord spelling: Cm7

